

# The PROVEN Way to Reduce Catheter Related Blood Stream Infections

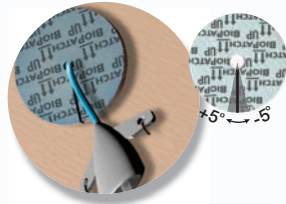
## How to Place BioPATCH® Protective Disk with CHG



**LINE INSERTION:** Leave a minimum of 1.25cm of catheter to allow for proper cleaning and to apply BioPATCH®



**CLEANING:** Prepare site with antiseptic and wait until the skin is **completely dry.**



**APPLICATION of BioPATCH®:** Apply BioPATCH® **printed side up** with radial slit approximated and aligned no more than 5° from catheter tubing exiting the body (for ease of removal).

**Do not peel printed side from BioPATCH®**



**DRESSING:** Ensure BioPATCH® has 360° contact with skin around catheter. Cover with transparent film dressing.



**REMOVAL:** When slit is aligned correctly, BioPATCH® will remain attached to the transparent film dressing and removal will be simultaneous.

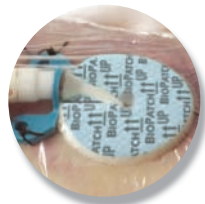
## BioPATCH® Applications



Central Venous Catheters



Dialysis Catheters



Arterial Catheters



PICC Lines



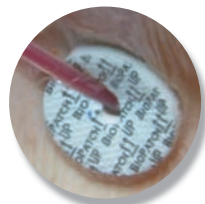
Peripheral IVs



Epidural Catheters



Implanted Venous Ports



Drains

## BioPATCH® Size Selections



ORDER CODE	4150	4151	4152
SIZE	1" disk (2.5 cm) w/4.0 mm center hole	3/4" disk (1.9 cm) w/1.5 mm center hole	1" disk (2.5 cm) w/7.0 mm center hole
FRENCH SIZE RANGE	6-12 Fr	<6 Fr	13-20 Fr
AVERAGE AMOUNT OF CHG PER DRESSING	92 mg	52.5 mg	86.8 mg
QUANTITY PER CASE	10/box 4 boxes/case; 40	10/box 4 boxes/case; 40	10/box 4 boxes/case; 40

## Tips & Troubleshooting



**UPSIDE DOWN:** The white side of BioPATCH® must face down. **BioPATCH® should be changed.**



**ON TOP OF LINE:** Ensure 360° contact with skin around catheter. **BioPATCH® should be changed.**



**SLIT NOT APPROXIMATED:** Edges of radial slit should approximate to maximize efficacy. **BioPATCH® should be changed.**



**SATURATED:** BioPATCH® can absorb 8 times its weight in fluid. In this case, foam has become saturated. **BioPATCH® should be changed.**



For Full Prescribing Information or technical support, call 1-877-ETHICON (1-877-384-4266) or visit [www.BioPATCH.com](http://www.BioPATCH.com)

To place an order, call 1-800-255-2500

References 1. Maki DG, Mermel L, Genthner D, Hua S, Chiacchierini RP. An evaluation of BioPATCH® Antimicrobial Dressing compared to routine standard care in the prevention of catheter-related bloodstream infection. Johnson & Johnson Wound Management, a division of Ethicon, Inc. 2000. Data on file.