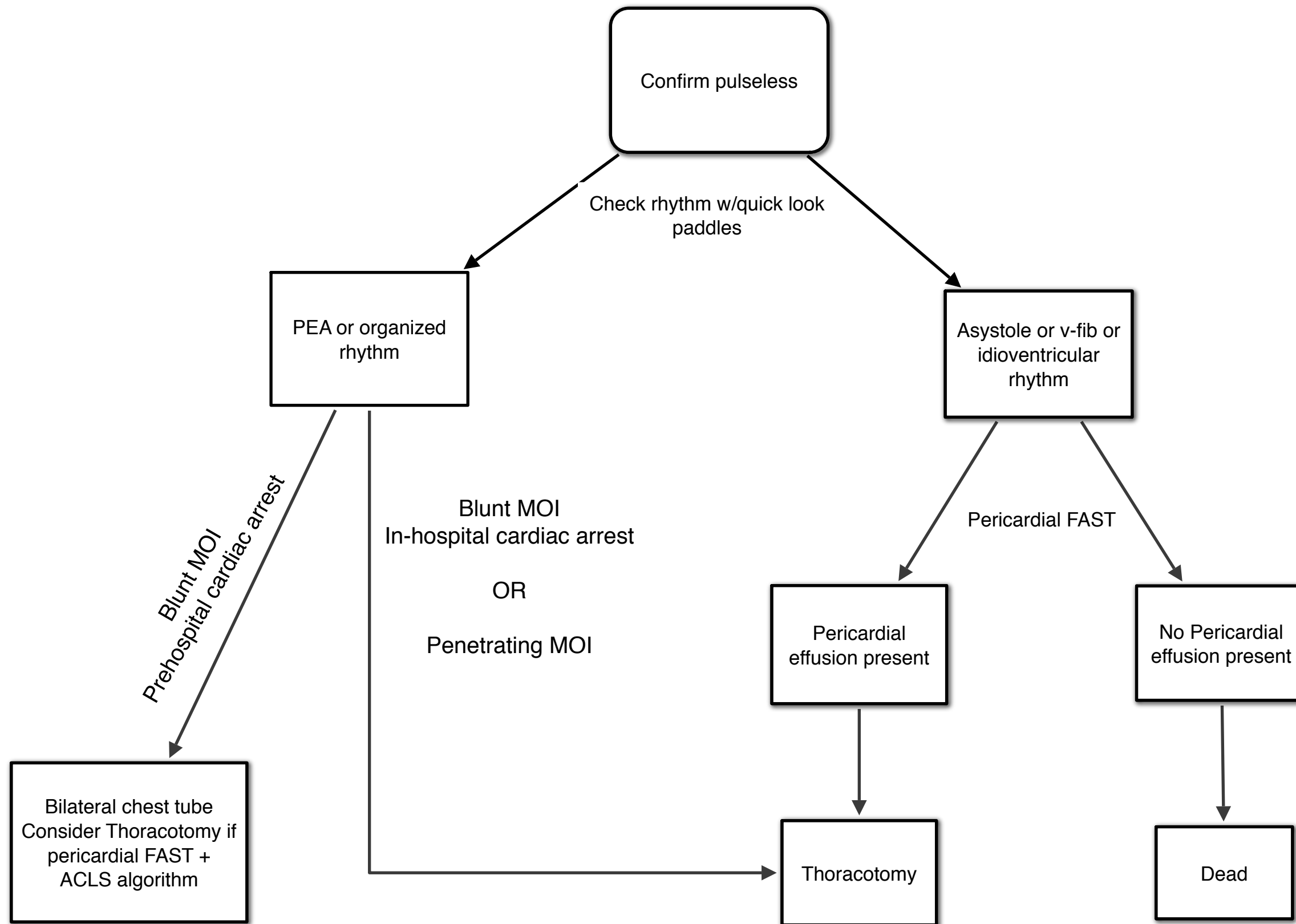


Resuscitative Thoracotomy Guideline



Factors to consider in deciding on whether or not to proceed with thoracotomy include down-time, age, mechanism of injury, number of wounds

This is a guideline only. The decision to proceed or not with thoracotomy rests with the trauma team leader but reasons for deviation from the guideline must be documented

MOI = Mechanism of Injury